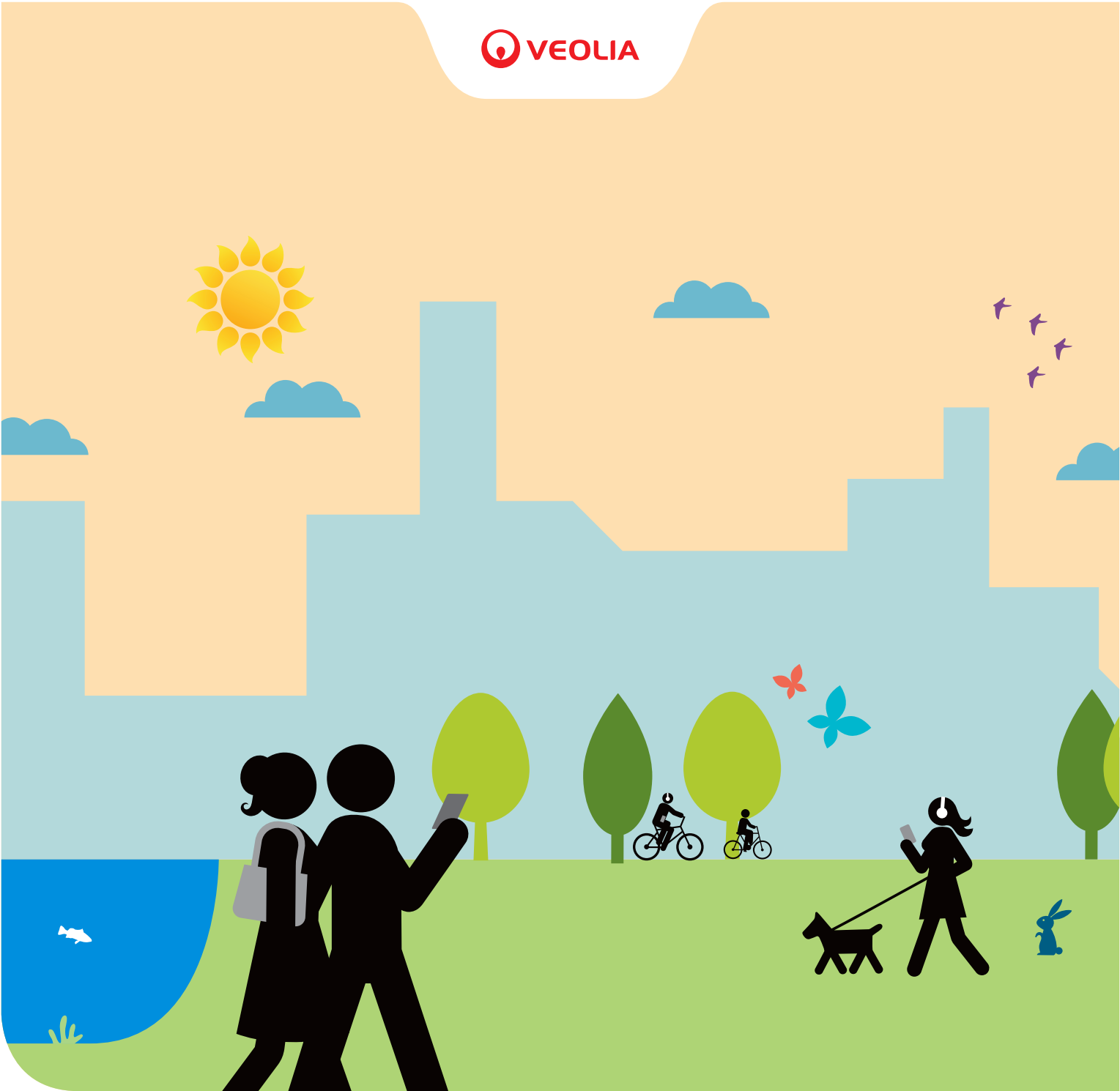


Resourcing the world

Veolia North America
53 State Street, 14th floor • Boston, MA 02109
tel +1 617 482 8080 • boston@veolia.com
twitter: [@veolia_na](https://twitter.com/veolia_na)
veolianorthamerica.com

Green Steam

Boston-Cambridge



Veolia in Boston & Cambridge

Located beneath the streets and bridges of Boston and Cambridge, invisible to the cities above, is a network of district energy steam pipes delivering environmentally friendly thermal energy or “Green Steam” to some of the Commonwealth’s premier medical research institutions, hospitals, hotels, museums and government buildings. Combining existing steam network infrastructure with the latest energy efficient technology enables Veolia to help reduce the region’s greenhouse gas emissions and minimize environmental impact to the Charles River.

Our district energy networks serve the critical heating and cooling needs of over 250 customers in the central business district of Boston, the biotechnology corridor of Cambridge and the Longwood Medical Area. In addition, Veolia operates the Kendall Station combined heat and power (CHP) plant, a cogeneration plant on behalf of a major biotechnology company in Cambridge and the MATEP facility in the Longwood Medical Area of Boston.

Veolia’s long-term commitment to the sustainable development of Boston, Cambridge and the Commonwealth of Massachusetts is demonstrated with the completion of the Boston-Cambridge “Green Steam” Connection – the latest in a series of major investments improving critical energy infrastructure.

Veolia by the Numbers

- **250** – customers served by Veolia’s Boston-Cambridge network
- **679** – employees in Massachusetts
- **44M sq ft** – area of buildings in Boston and Cambridge receiving thermal energy from Veolia
- **70%** – percentage of Boston’s high-rise buildings served by Veolia
- **1,738** – hospital beds served by Veolia (we serve all of the large healthcare facilities in Boston)



Energy, water and environmental services are critical for sustainability and human progress, and Veolia offers the most complete range of solutions to meet these challenges. With over 200,000 employees worldwide, we provide water, waste and energy services and energy management solutions that contribute directly to our customers’ sustainable development and competitiveness.



Green Steam: Economic & Environmental Benefits

The “Green Steam” project represents a \$112 million investment by Veolia and our partners into improving the Boston-Cambridge energy infrastructure. The recently completed 7,000-foot steam pipeline extension allows the company to export more “Green Steam” from its newly-acquired Kendall Station CHP plant. Veolia’s investments will bring multiple benefits to energy consumers by increasing capacity, reliability and overall system efficiency.

Green Steam by the Numbers

- **\$112M** – investment made via the “Green Steam” project (to date, Veolia has invested \$168M into improving the Boston-Cambridge system)
- **475,000 tons** – annual reduction of the region’s greenhouse gas emissions
- **80,000 cars** – carbon reduction equivalent of cars removed from the roads annually
- **6%** – percentage reduction of non-transportation carbon emissions for both cities
- **147,500 man hours** – labor invested to support the construction of the “Green Steam” project
- **61% / 36%** – percentage reduction of the region’s SO2 and NOx emissions, respectively
- **80% by 2050** – “Green Steam” project supports the Greenovate Boston goal of reducing Boston’s greenhouse gas emissions 25% by 2020 and 80% by 2050